

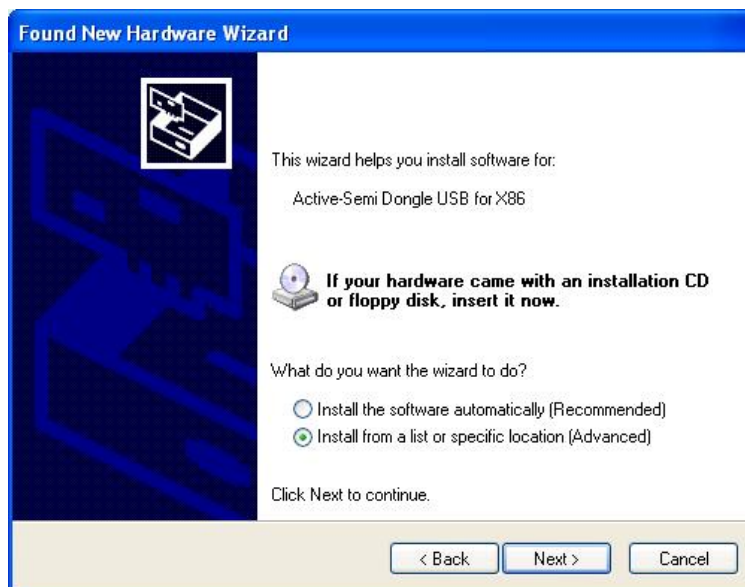
## Window XP

---

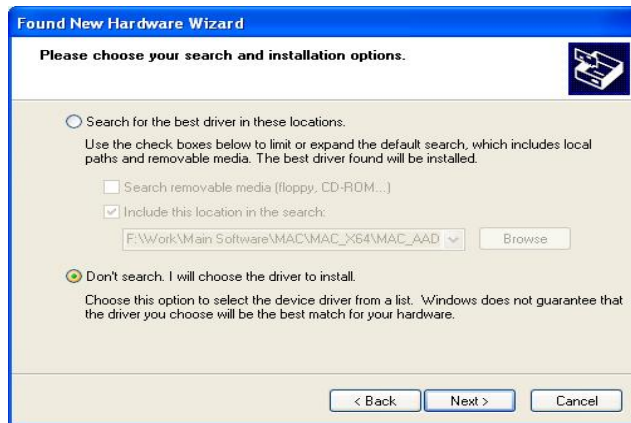
In the first time Dongle plug in, a window appears as below:



Choose **No, not this time** and then click **Next** button. A new window appears as below :



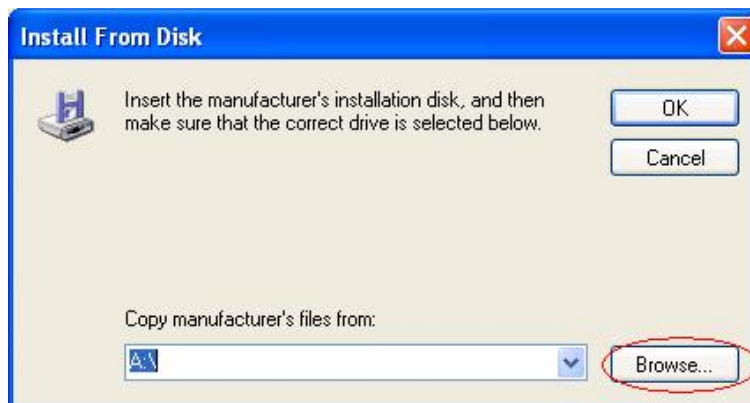
Choose **Install from a list or specific location(Advanced)** and then click **Next** button. A new window appears as following:



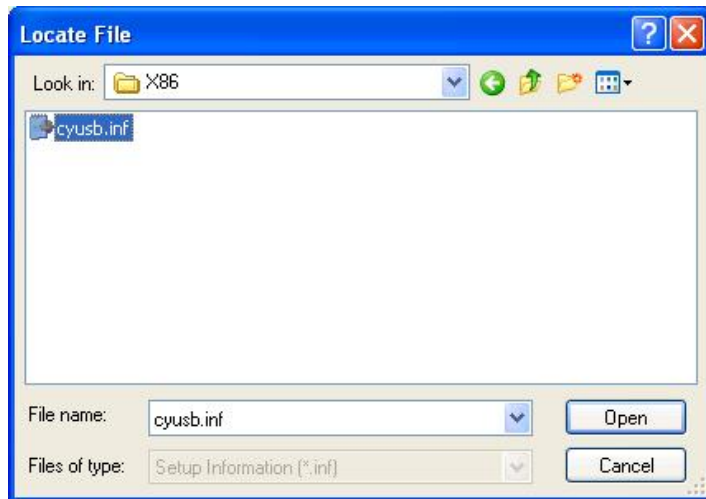
Choose **Don't search. I will choose the driver to install** and then click **Next** button



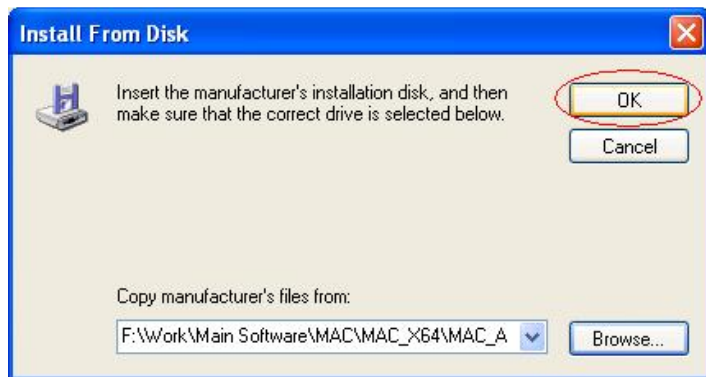
In the new window appears, click on **Have Disk** button



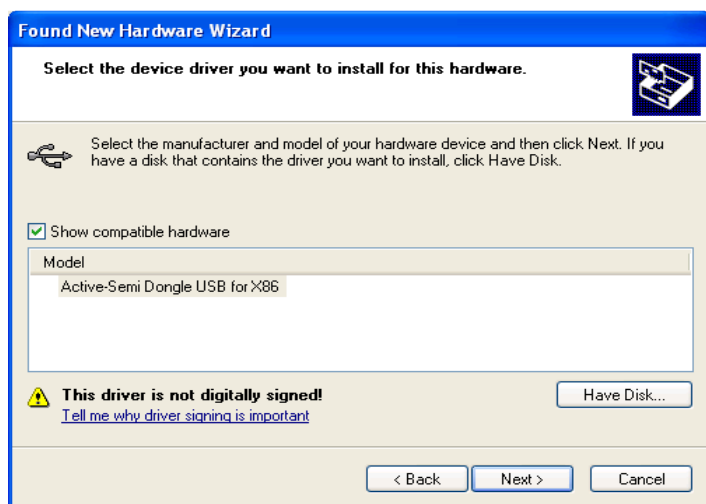
In the new window appears, click on **Browse** button



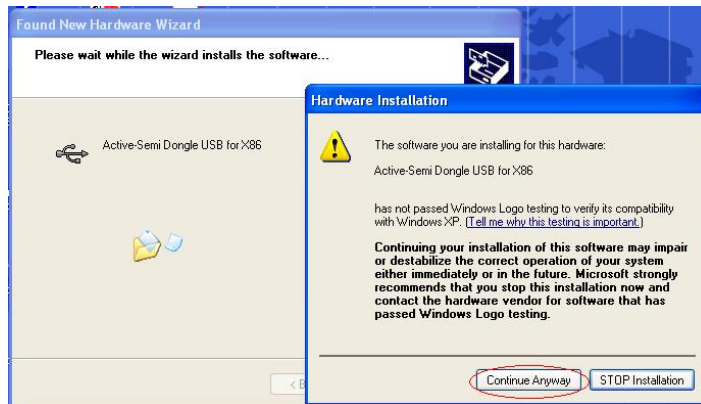
Select **cyusb.inf** in **..\ Driver\X86** folder and then click **Open** button



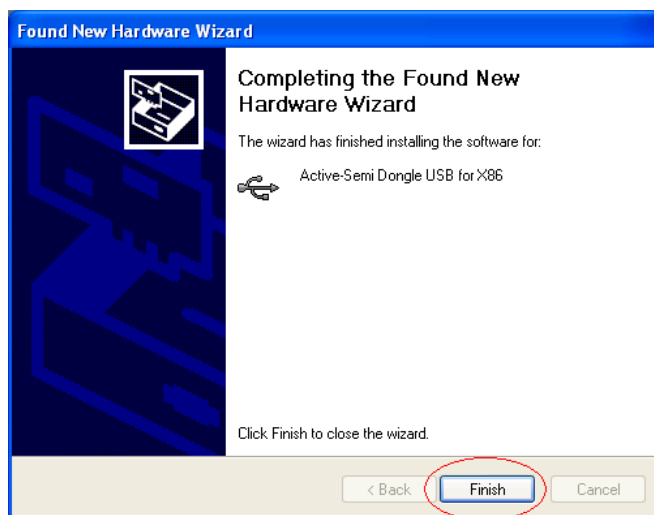
Click **OK** button



In window appears, choose **Active-semi Dongle USB for X86** in model group and then click **Next** button



Click **Continue Anyway** button and wait for progress in few minutes



Click **Finish** button to complete. Now, Device Management will have the below result

